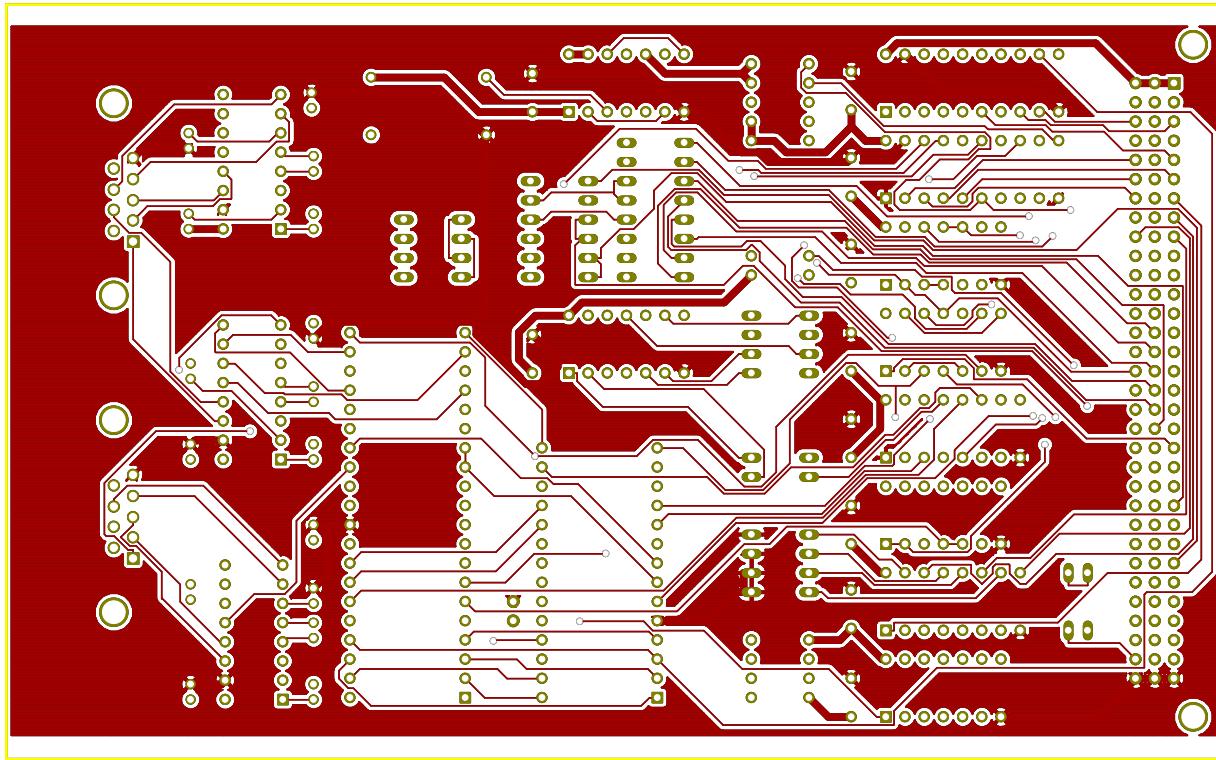
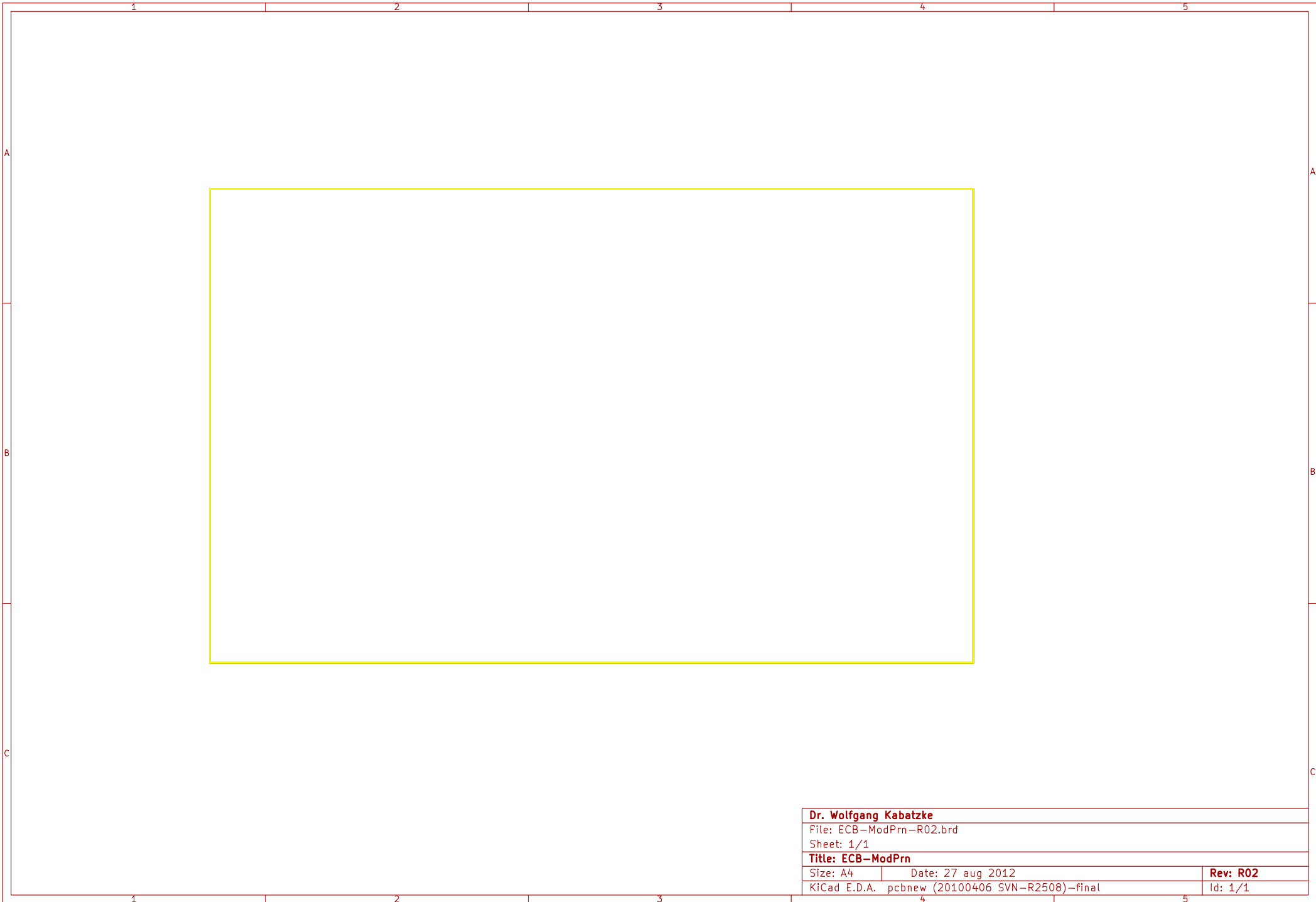


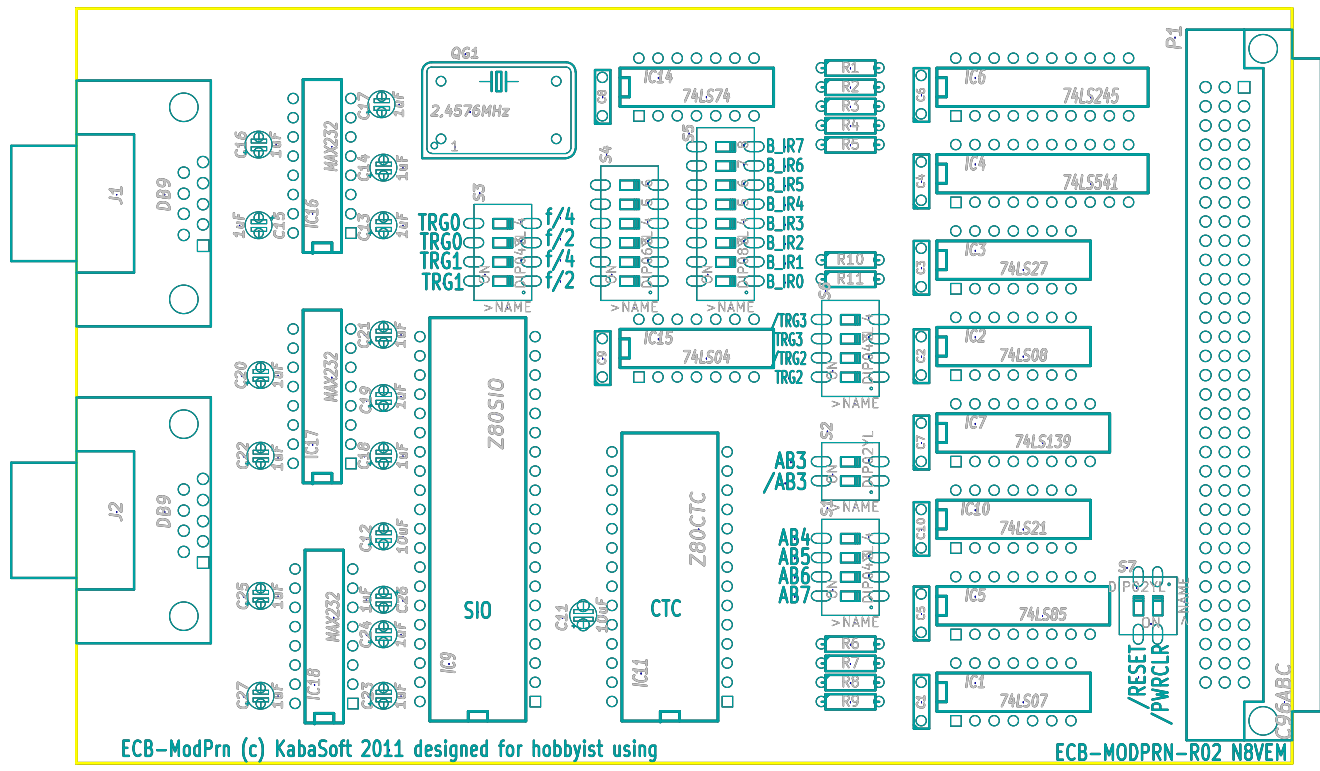
Dr. Wolfgang Kabatzke		
File: ECB-ModPrn-R02.brd		
Sheet: 1/1		
Title: ECB-ModPrn		
Size: A4	Date: 27 aug 2012	Rev: R02
KiCad E.D.A. pcbnew (20100406 SVN-R2508)-final		Id: 1/1



Dr. Wolfgang Kabatzke		
File: ECB-ModPrn-R02.brd		
Sheet: 1/1		
Title: ECB-ModPrn		
Size: A4	Date: 27 aug 2012	Rev: R02
KiCad E.D.A. pcbnew (20100406 SVN-R2508)-final		Id: 1/1



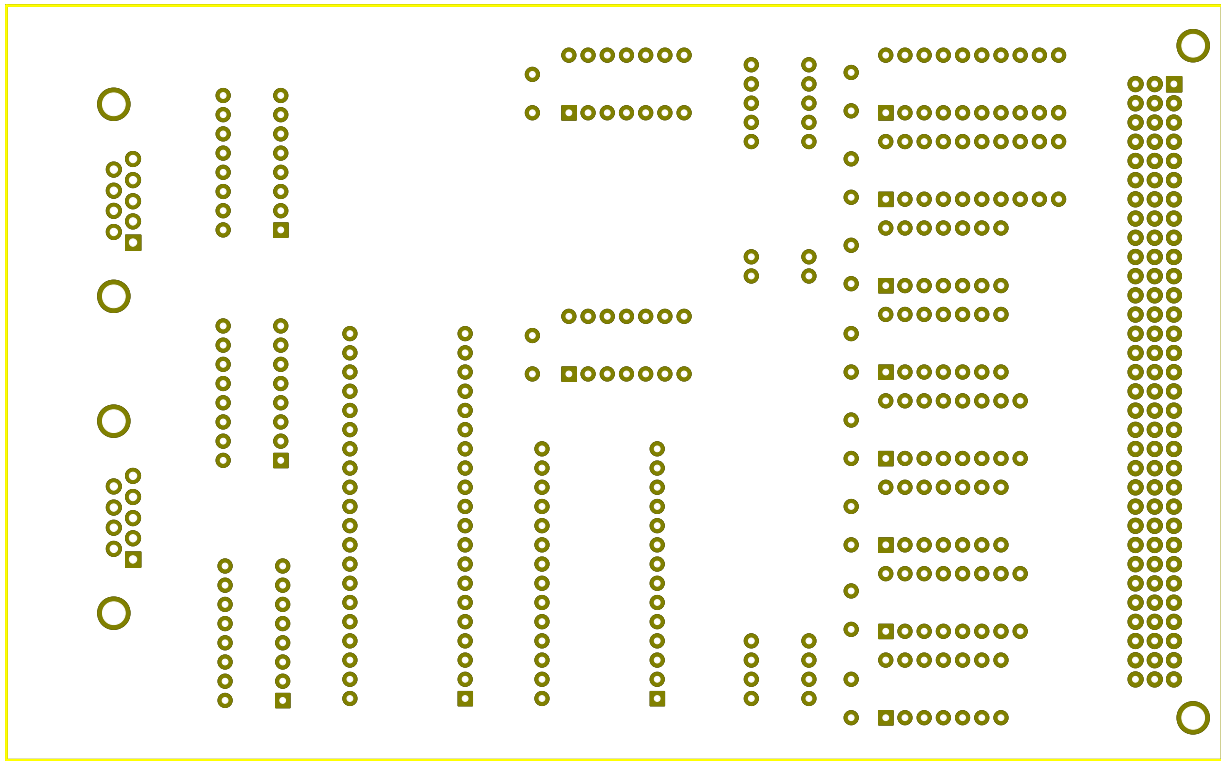
Dr. Wolfgang Kabatzke		
File: ECB-ModPrn-R02.brd		
Sheet: 1/1		
Title: ECB-ModPrn		
Size: A4	Date: 27 aug 2012	Rev: R02
KiCad E.D.A.	pcbnew (20100406 SVN-R2508)-final	Id: 1/1



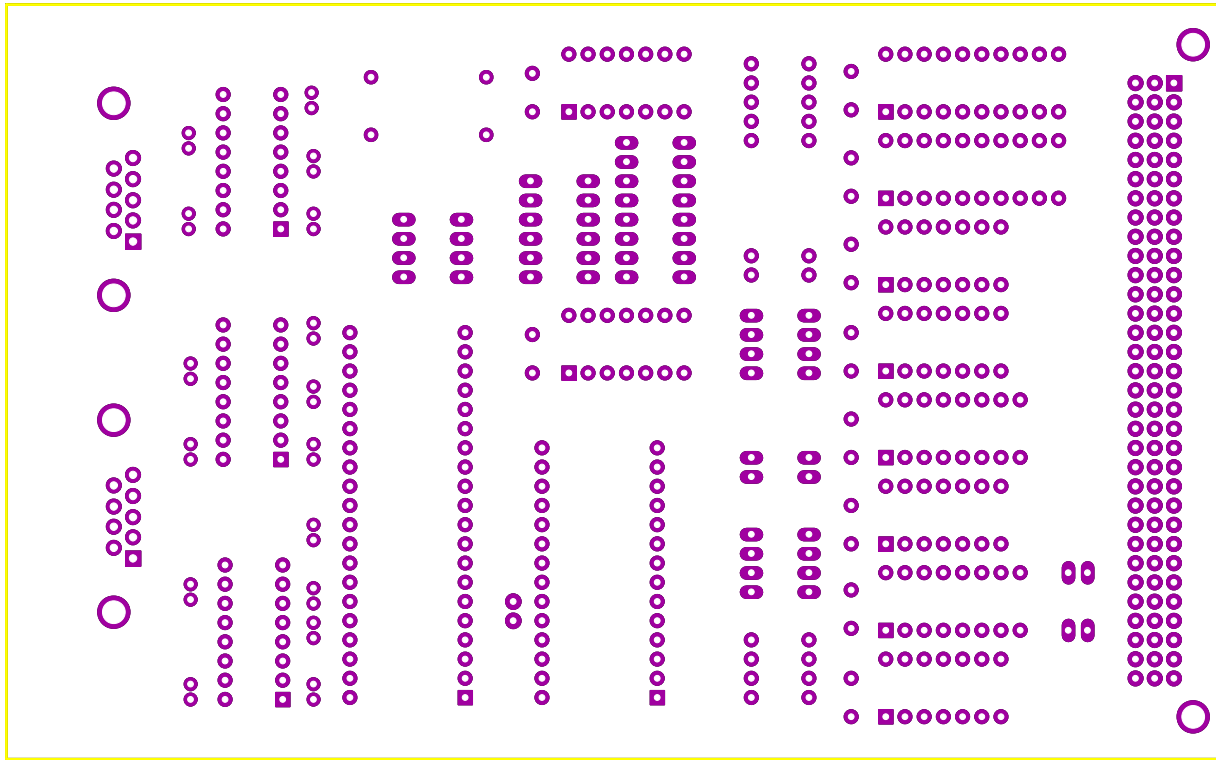
ECB-ModPrn (c) KabaSoft 2011 designed for hobbyist using

ECB-MODPRN-R02 N8VEM

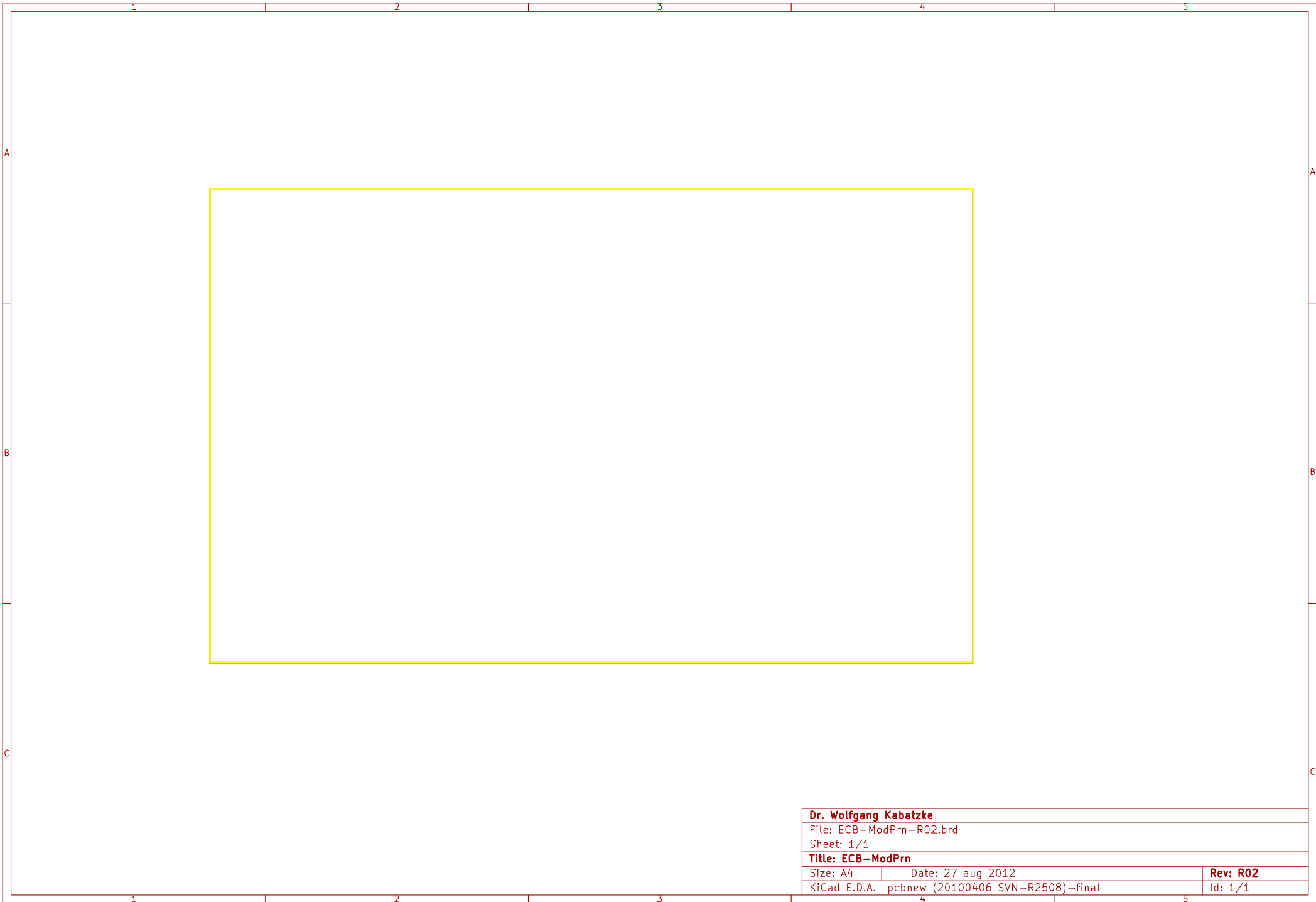
Dr. Wolfgang Kabatzke		
File: ECB-ModPrn-R02.brd		
Sheet: 1/1		
Title: ECB-ModPrn		
Size: A4	Date: 27 aug 2012	Rev: R02
KiCad E.D.A. pcbnew (20100406 SVN-R2508)-final		Id: 1/1



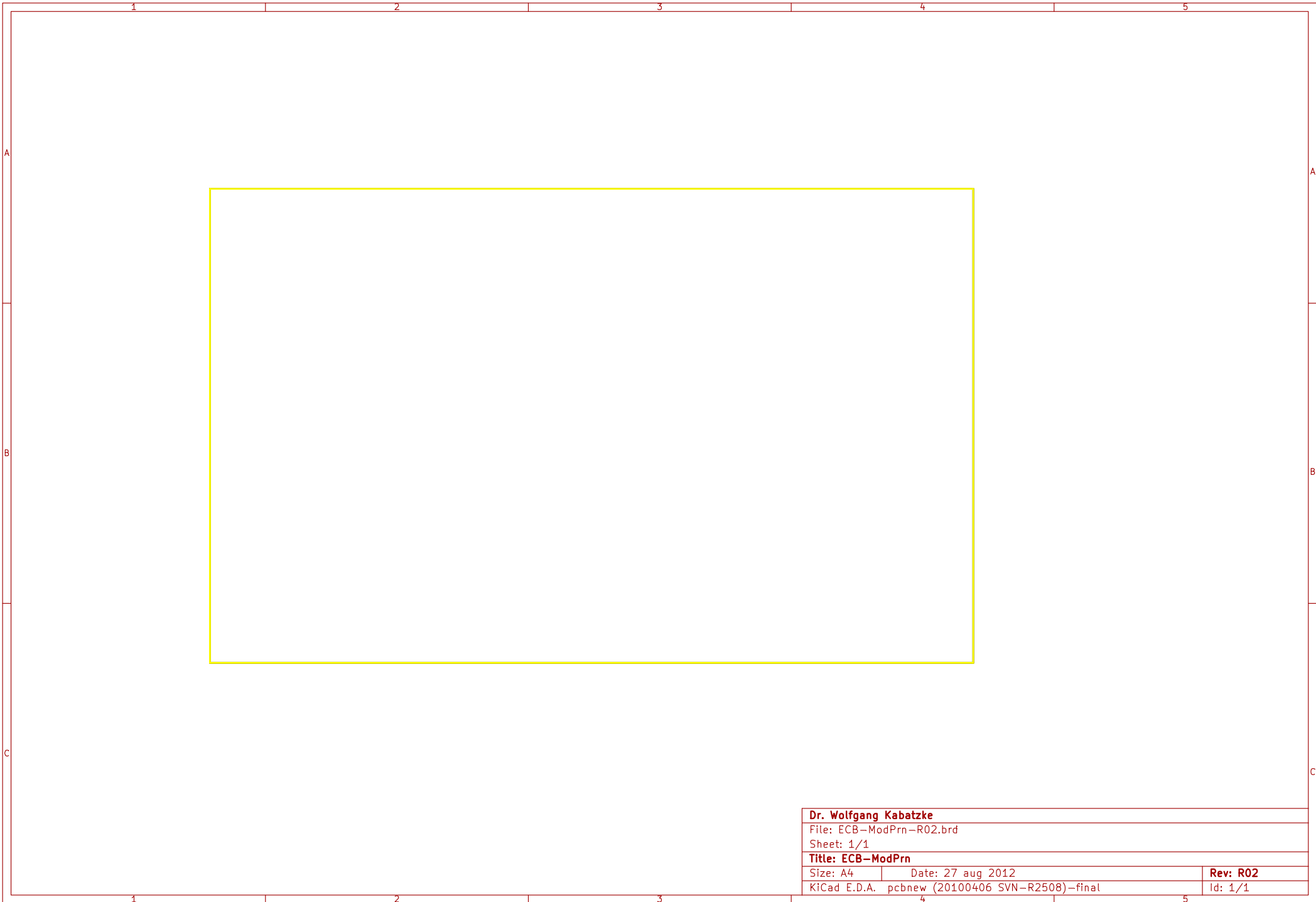
Dr. Wolfgang Kabatzke		
File: ECB-ModPrn-R02.brd		
Sheet: 1/1		
Title: ECB-ModPrn		
Size: A4	Date: 27 aug 2012	Rev: R02
KiCad E.D.A.	pcbnew (20100406 SVN-R2508)-final	Id: 1/1



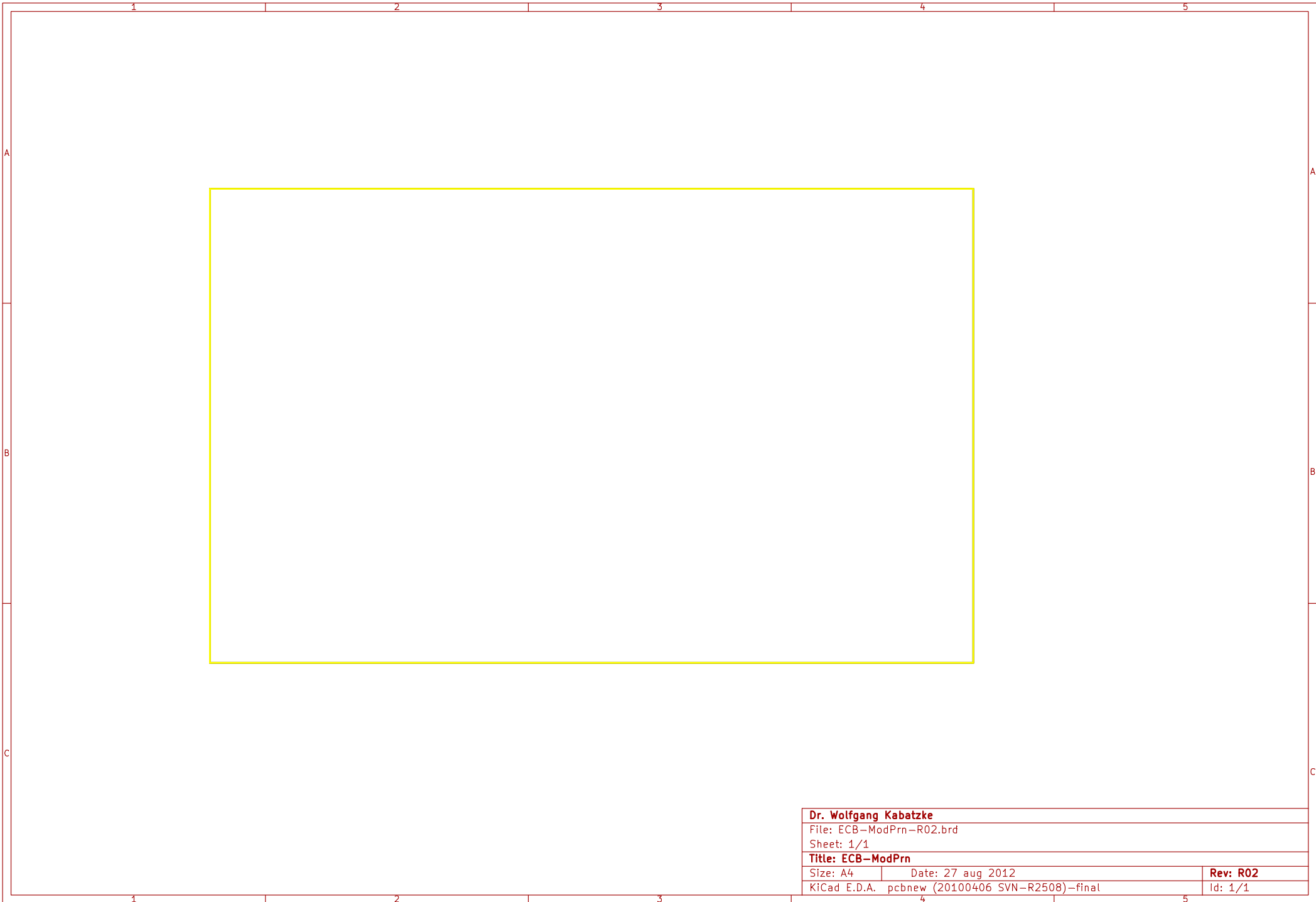
Dr. Wolfgang Kabatzke		
File: ECB-ModPrn-R02.brd		
Sheet: 1/1		
Title: ECB-ModPrn		
Size: A4	Date: 27 aug 2012	Rev: R02
KiCad E.D.A.	pcbnew (20100406 SVN-R2508)-final	Id: 1/1



Dr. Wolfgang Kabatzke		
File: ECB-ModPrn-R02.brd		
Sheet: 1/1		
Title: ECB-ModPrn		
Size: A4	Date: 27 aug 2012	Rev: R02
KiCad E.D.A.	pcbnew (20100406 SVN-R2508)-final	Id: 1/1



Dr. Wolfgang Kabatzke		
File: ECB-ModPrn-R02.brd		
Sheet: 1/1		
Title: ECB-ModPrn		
Size: A4	Date: 27 aug 2012	Rev: R02
KiCad E.D.A.	pcbnew (20100406 SVN-R2508)-final	Id: 1/1



Dr. Wolfgang Kabatzke		
File: ECB-ModPrn-R02.brd		
Sheet: 1/1		
Title: ECB-ModPrn		
Size: A4	Date: 27 aug 2012	Rev: R02
KiCad E.D.A.	pcbnew (20100406 SVN-R2508)-final	Id: 1/1